

Bisbee

Designed by Brenda York



skill level: Intermediate
One size

finished measurements
Approximately 72" across x 21"
down center

materials
4 hanks **BERROCO MAYA** (50 grs),
#5650 Rosa
Straight knitting needles, size 8
(5.00 mm) OR SIZE TO OBTAIN
GAUGE

gauge
20 sts and 28 rows = 4" in St st
TO SAVE TIME, TAKE TIME TO CHECK
GAUGE

Berroco Maya®

Find this Yarn 

 **BERROCO**®
www.berroco.com

Love Berroco patterns?
Sign up for our **KnitBits**® newsletter.



NOTE: We recommend using yarns called for in our instructions. Every effort has been made to ensure that directions contained in this book are accurate and complete, however errors do occur. We cannot be responsible for variance of individual knitters, human or typographical errors.

All pattern PDFs are updated when corrections are made. In the event of finding an error, please make sure you've downloaded the most recent version.

NOTE

Center diamond of this shawl is worked first, following charts. Sides are then picked up along upper edges of diamond and worked out.

CENTER DIAMOND

Cast on 4 sts. Knit 1 row on WS. Work 38 rows of Chart 1, then work to Row 69 of Chart 2 – 73 sts. Cast on 1 st at each end of Row 70 – 75 sts. These sts become selvedge sts along the upper edges where sts for sides will be picked up. Continue to follow Chart 2 until 100 rows have been completed, then work 40 rows of Chart 3, end with a WS row – 5 sts. Bind off.

RIGHT SIDE

With RS facing, working over selvedge sts, pick up and knit 65 sts along upper right edge of center diamond.

Set-Up Row (WS): K2, purl to last 2 sts, k2.

Row 1 (RS): K1, SSK, yo, k2tog, knit to last 5 sts, SSK, yo, k2tog, k1 – 2 sts dec'd.

Row 2: K1, purl to last 2 sts, k2.

Row 3: K1, SSK, yo, knit to last 4 sts, yo, k2tog, k2.

Row 4: Rep Row 2.

Rows 5 – 8: Rep Rows 3 and 4 twice more. Rep these 8 rows 27 times more, end with a WS row – 9 sts.

Shape End: Row 1 (RS): K1, SSK, yo, CDD, yo, k2tog, k1 – 7 sts.

Row 2: K2, p3, k2.

Row 3: K2, yo, CDD, yo, k2.

Row 4: Rep Row 2.

Row 5: K2, CDD, k2 – 5 sts.

Row 6: Knit.

Row 7: K1, CDD, k1 – 3 sts.

Row 8: Knit.

Row 9: K3tog. Fasten off last st.



LEFT SIDE

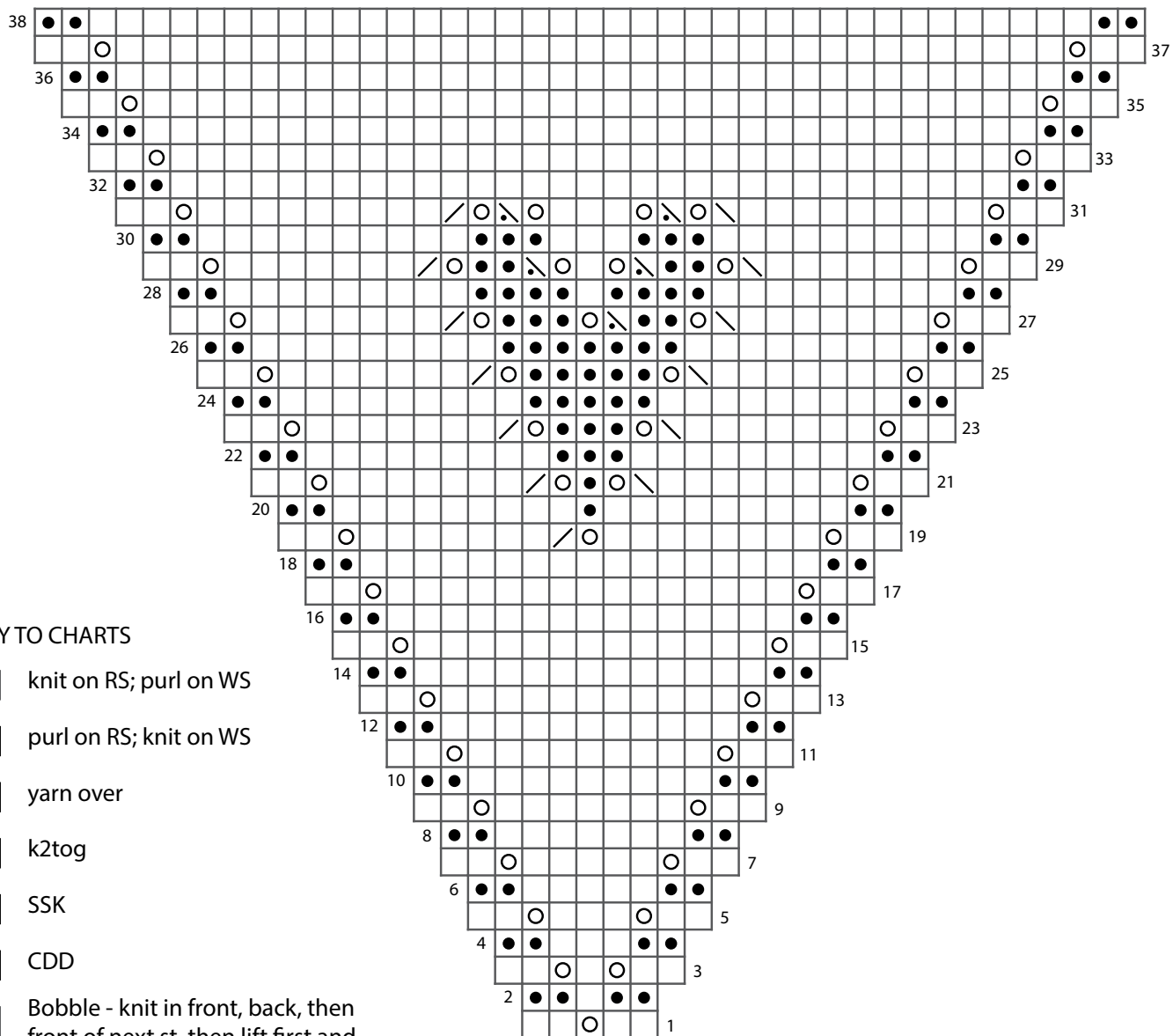
With RS facing, working over selvedge sts, pick up and knit 65 sts along upper left edge of center diamond.

Complete as for right side.

FINISHING

Weave in all ends and block as desired.

CHART 1



KEY TO CHARTS

- knit on RS; purl on WS
- purl on RS; knit on WS
- yarn over
- k2tog
- SSK
- CDD
- Bobble - knit in front, back, then front of next st, then lift first and second st over third - 1 st remains
- p2tog
- cast on 1 st

CHART NOTES

On RS, work from right to left.
 On WS, work from left to right.

CHART 2

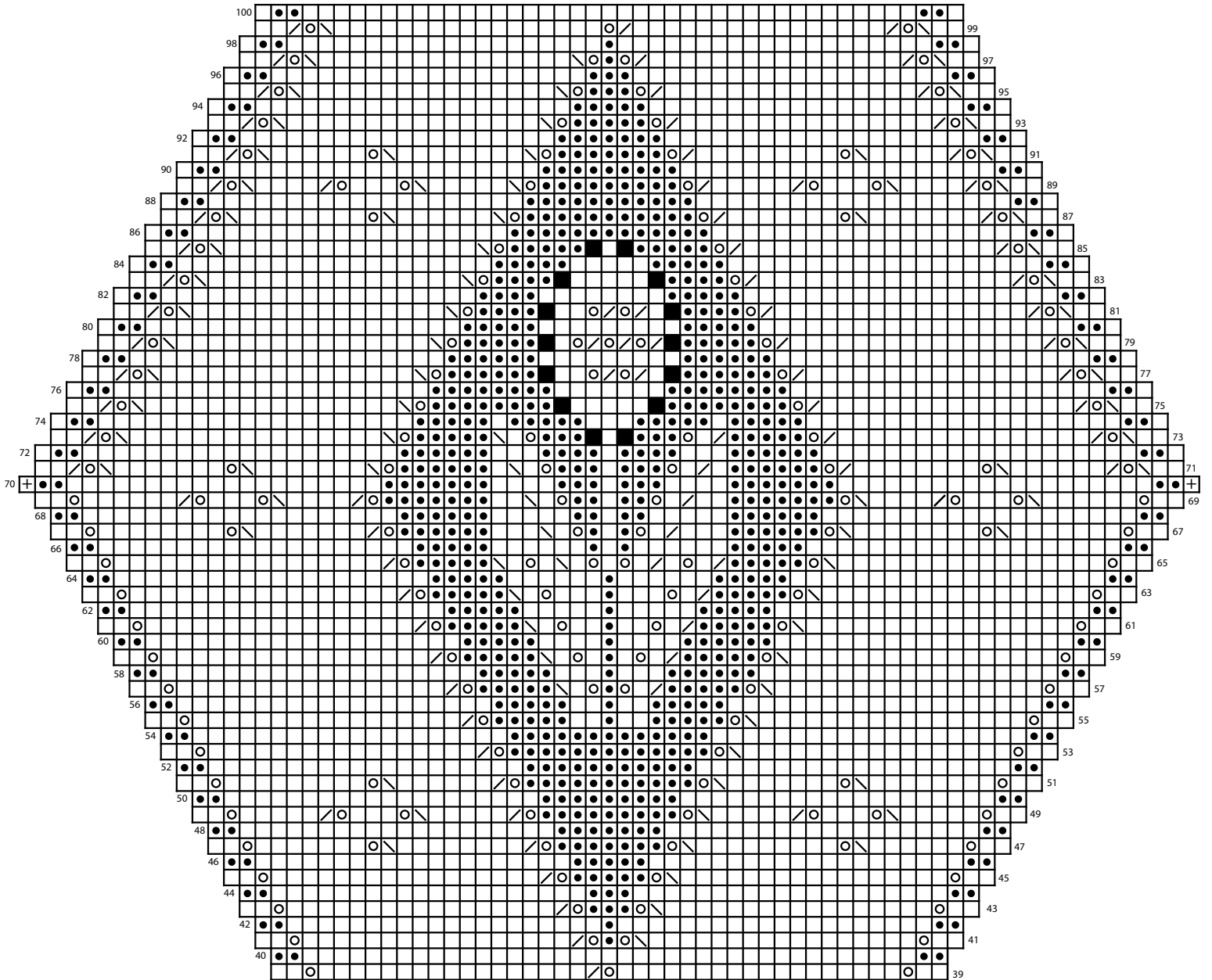
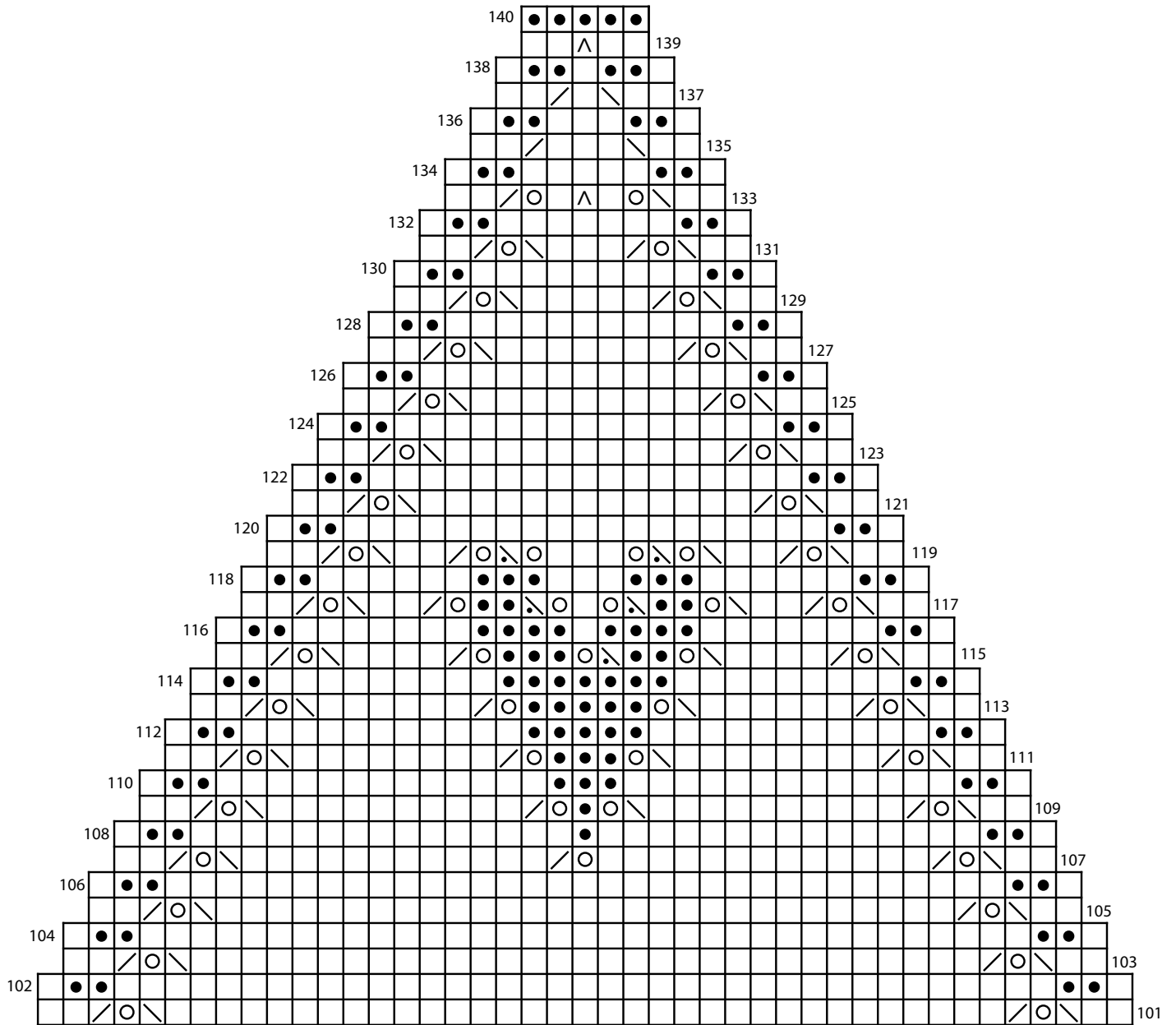


CHART 3



ABBREVIATIONS & TERMS

beg: beginning
CC: contrasting color
cdd (centered double decrease): Slip 2 together (as if to k2tog), knit 1, pass the 2 slipped stitches over.
cn: cable needle
cont: continue
dec: decrease
dpn: double pointed needles
est: established
inc: increase
K: knit
k tbl: knit through the back loop(s)
k2tog: Knit 2 stitches together
k3tog: Knit 3 stitches together
LH: left hand
MC: main color
M1: Pick up horizontal strand between stitch just worked and next stitch from front to back, place on left hand needle, knit this stitch through the back (1 stitch increased).
M1L: Work as for M1.
M1p: Pick up horizontal strand between stitch just worked and next stitch from front to back, place on left hand needle, purl this stitch through the back (1 stitch increased).
M1pL: Work as for M1p.
M1pR: Pick up horizontal strand between stitch just worked and next stitch from back to front, place on left hand needle, purl this stitch through the front (1 stitch increased).
M1R: Pick up horizontal strand between stitch just worked and next stitch from back to front, place on left hand needle, knit this stitch through the front (1 stitch increased).
p: purl
p tbl: purl through the back loop(s)
pat(s): pattern(s)
pm: place marker
pssso: pass slip stitch over knit stitch
p2tog: purl 2 stitches together
p2sso: pass 2 slip stitches over knit stitch
p3tog: purl 3 stitches together
rem: remaining
rep: repeat
RH: right hand
rnd(s): round(s)
RS: right side
sl: slip

sm: slip marker
SSK: Slip 2 stitches knitwise, insert point of left hand needle through fronts of these 2 stitches and knit 2 together.
SSP: Slip 2 stitches knitwise, transfer these 2 stitches back to left hand needle, purl 2 together through the back loops.
st(s): stitch(es)
TBL: through back loop(s)
tog: together
w&t: wrap and turn, a method of concealing a hole created in short row shaping. With yarn held in back, slip stitch to be wrapped purlwise, then bring yarn between needles to the front. Slip that same stitch back to the left needle, then bring the yarn to the back again. Turn your work. Unless otherwise indicated, each time you come to a wrapped stitch when working subsequent rows, slip the wrap back over stitch and onto needle, then work the wrap together with its accompanying stitch.
WS: wrong side
wyib: with yarn in back
wyif: with yarn in front
yo: yarn over
end on WS: end having just completed a Wrong Side row.
end on RS: end having just completed a Right Side row
Stockinette stitch (St st): Knit 1 row, purl 1 row alternately when working on straight needles. The knit side is the right side of work. Knit EVERY round when working in the round on a circular needle.
Reverse St st (Rev St st): Purl 1 row, knit 1 row alternately when working on straight needles. The purl side is the right side of the work. Purl EVERY round when working in the round on a circular needle.
GARTER ST: Knit EVERY row when working on straight needles. Knit 1 round, purl 1 round when working on a circular needle.